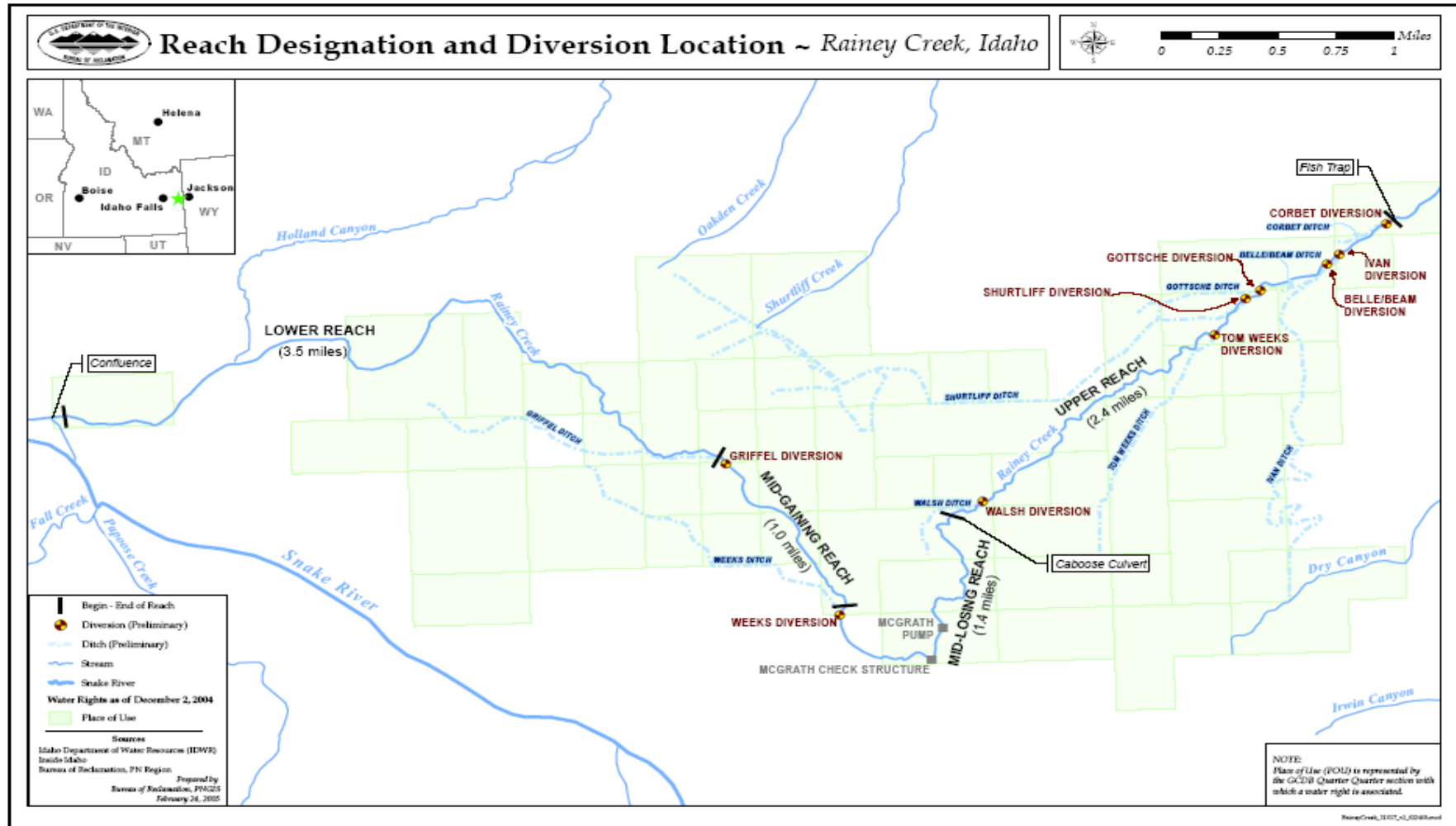


# Rainey Creek



- Rainey Creek is one of the four big spawning and rearing tributaries to the South Fork Snake River
- Goal of this project was to restore connectivity with the main stem by removing barriers and installing fish screens on out going ditches.
- Additionally stream bank stability was addressed by riparian fencing

# Rainey Creek Restoration Project



# South Fork of the Snake River

Henry's  
Fork

Idaho  
Falls

*flow*

Burns Creek

Pine Creek

Rainey Creek

Palisades Creek

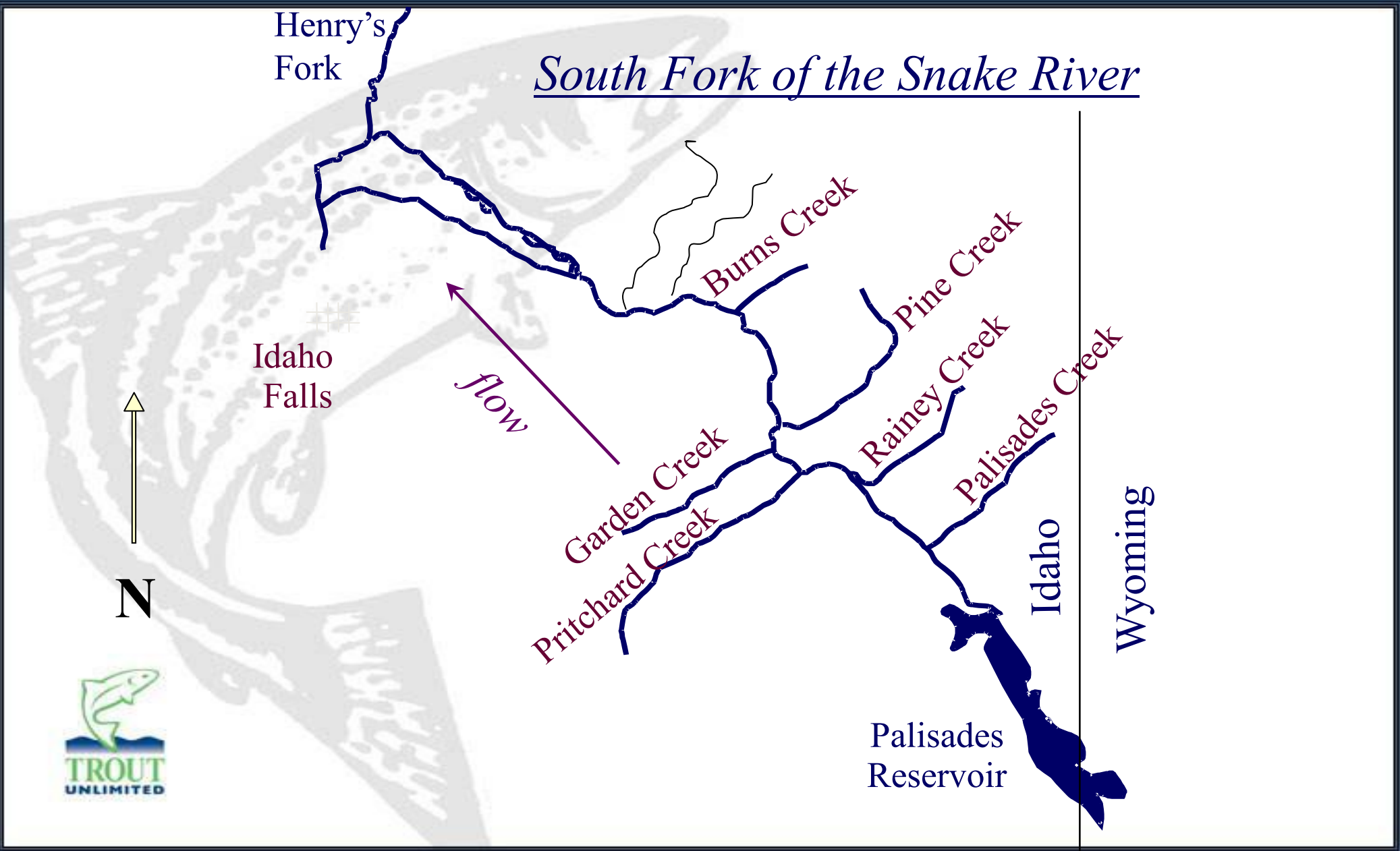
Garden Creek

Pritchard Creek

Idaho

Wyoming

Palisades  
Reservoir



## The Griffel Diversion Before Retrofit



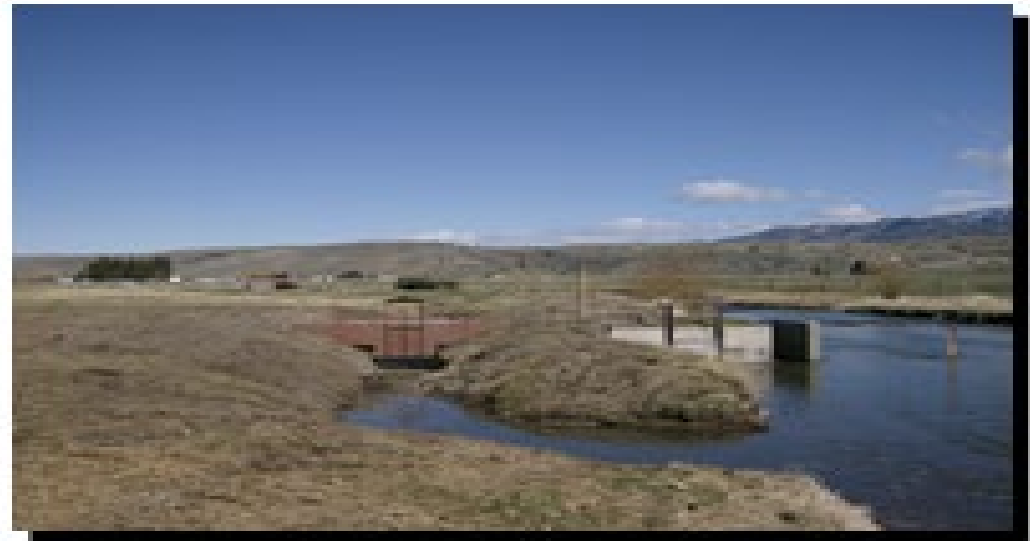
# Griffel Diversion Screen Construction



# Drum Screen Retrofit and the Griffel Diversion



# Griffel Diversion Results



# Weeks Diversion Problems





# Weeks Diversion Solutions



# Weeks Diversion Screen Modification



# Weeks Diversion Drum Screen Modification



# Weeks Diversion with new ladder in place and new livestock Water gap crossing



# McGrath Check



The problem



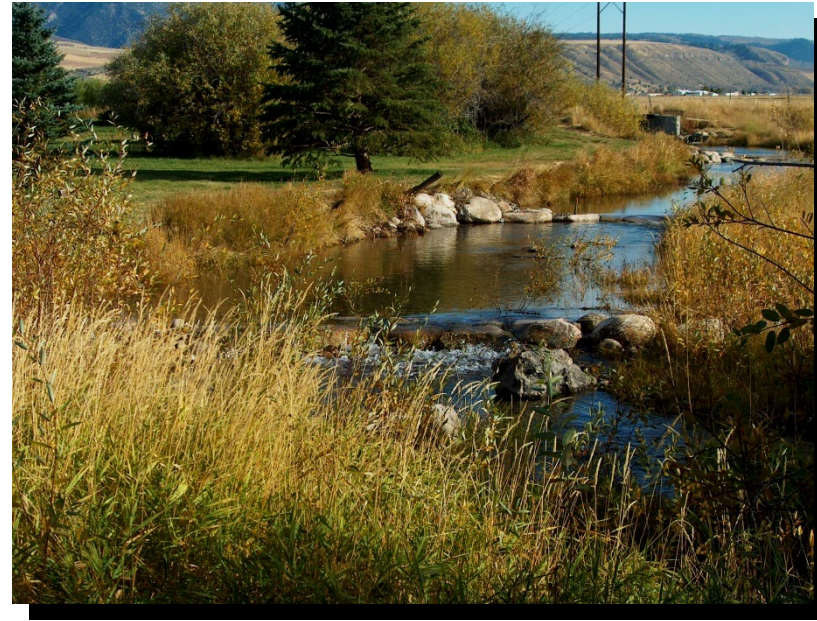
The Results

# Rainey Creek Diversion Replacement

Objective: Eliminate a barrier and restore fish passage on an existing diversion check



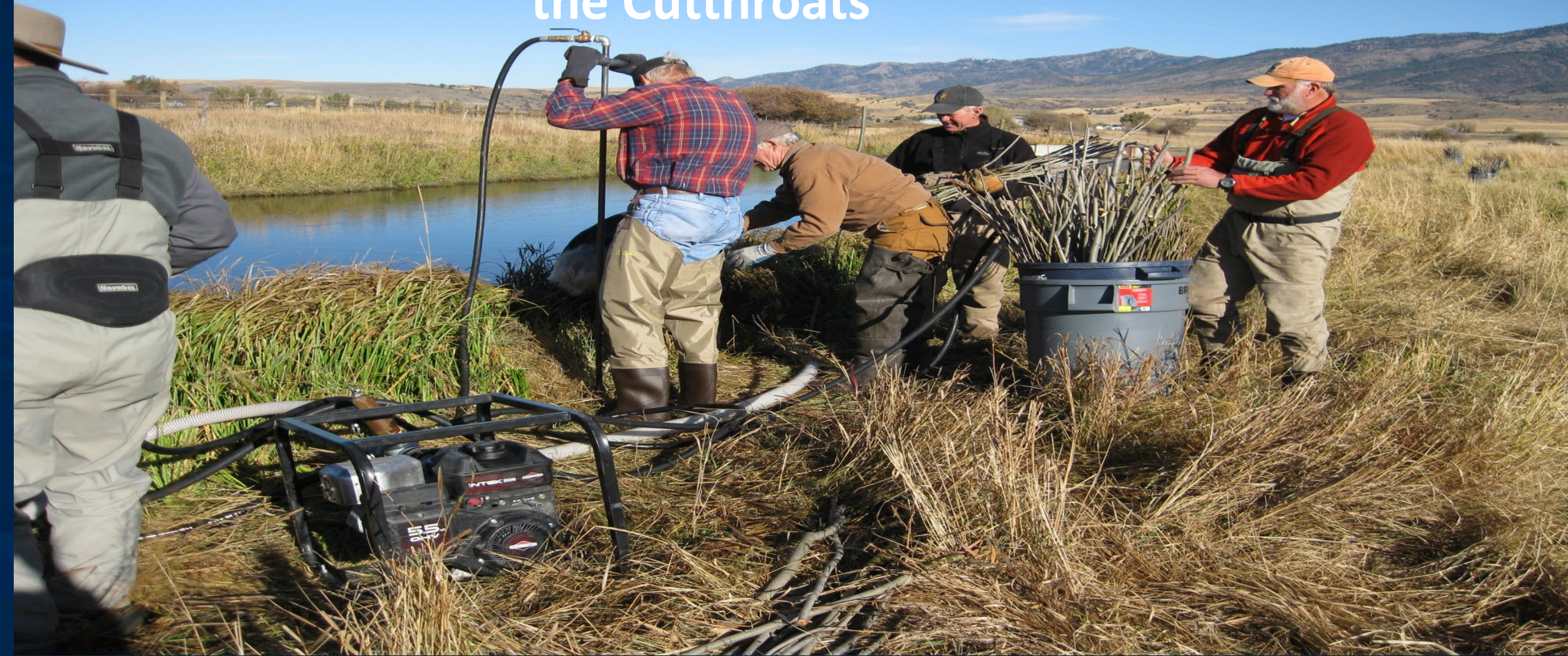
Before



After



# Willow Planting with the Cutthroats



# Caboose Culvert Problem







Caboose Culvert Passage Solution



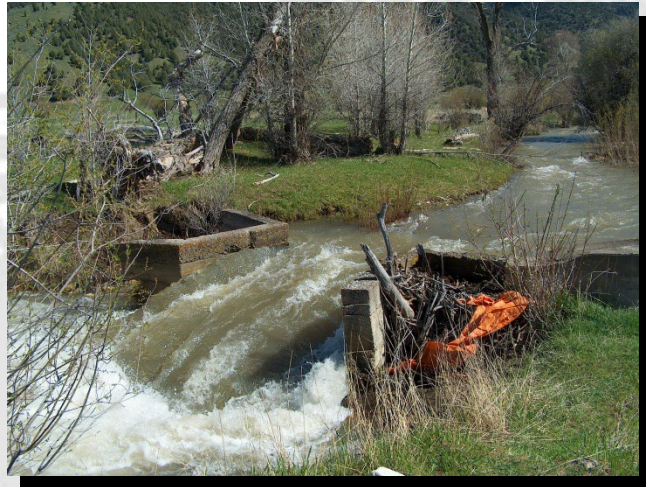
Caboose Culvert Passage Solution



## Caboose Culvert Fish Passage Weirs



# Glen Bills Diversion retrofit late 2008 or 2009



# Glen Bills Diversion Project / Rainey Creek



Looking upstream at new weirs  
that replaced the old diversion

# New Headgate Intake Structure



# New Hydrolox Belt Screen at the Glen Bills

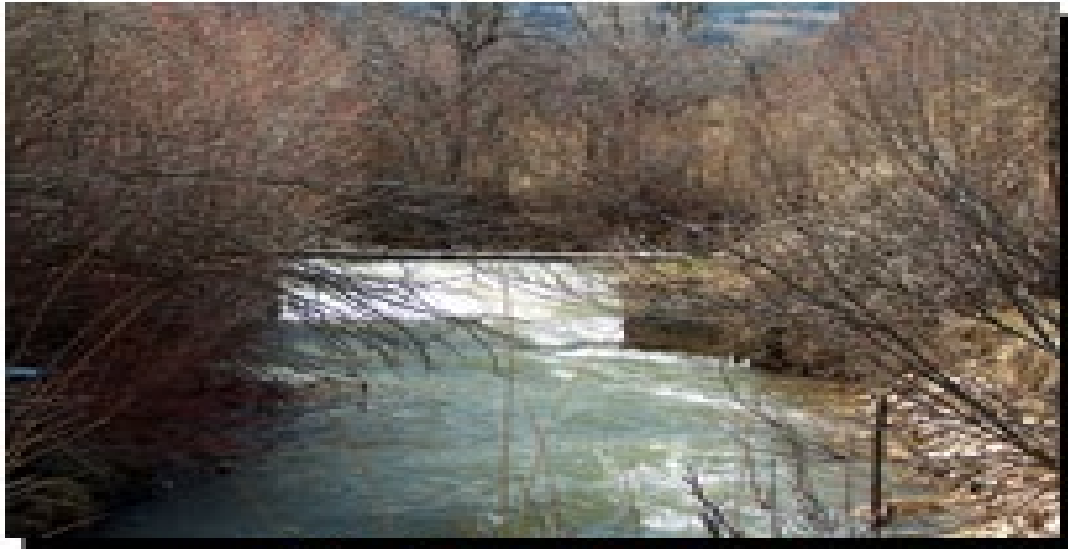




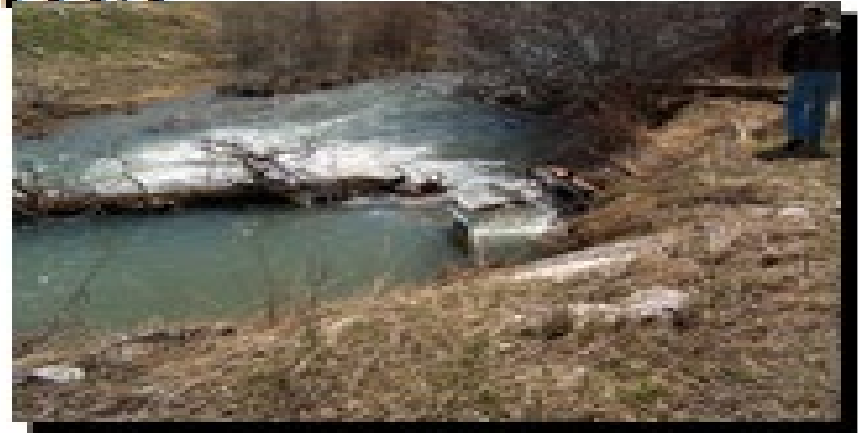
Beam Property on Upper Rainey Creek new riparian fencing and Livestock water gap fall 2007. Over a mile of new protection



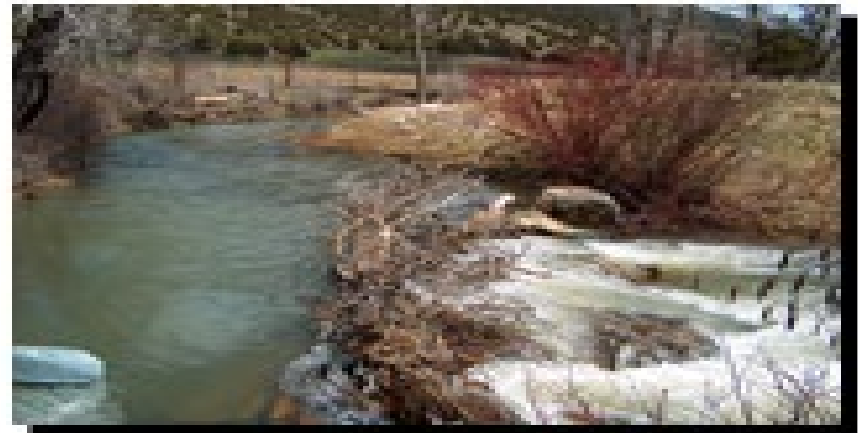
# Shurtleff / Gottsche Diversions Problems



Shurtleff Diversion



Gottsche Diversion



# New Combined Diversion Point for the Shurtleff & Gottsche Diversions



# Completed combined Shurtleff diversion with New Solar powered fish screens



# Beam Diversion Problem



## New Diversion for the Beam



# New Solar Powered Fish Screen at the Beam



# Removal of old non-functioning bubbler screen at the Hansen Guest Ranch Diversion





# Continued removal of Old Screen Structure



Old screen on the left and new screen on the right



# New Custom Designed Paddle Wheel Driven Drum Screen Peterson Metal Works Leadore Idaho



# Building location for new Drum Screen



# Positioning new screen for placement



# Checking Elevations and fitment



# Final Fitment and Setup



# Waiting for fish bypass pipe connection





## Budget Breakdown of Hansen Guest Ranch Screen

- Screen Fabrication Cost \$22,500.00
- Installation Cost by Rockin T Construction \$7,890.89
- Total Cost \$30,390,00
- South Fork Initiative / HFF Provided \$5,000.00 towards this project
- TU Embrace A Stream Provided \$8,000 in funding
- Eastside and Westside Conservation Districts provided \$10,000
- Balance was provided by the SRC Chapter

# Lower Rainey Creek Riparian Fencing on Third Creek



# More Third Creek Fencing Arn Berglund & Steve Griffel Landowner



# Third Creek looking down Swan Valley



# SRC Chapter Members getting it done on Third Creek



# SRC Chapter Planting Trees on the Bridge-to-Bridge Rainey Creek project that the South Fork Initiative / HFF funded



# SRC Chapter Members staging up for day of tree planting



# Getting the little guys involved on the Bridge to Bridge Project Rainey Creek





# Planting Trees on Third Creek Tributary to Lower Rainey Creek



# Project Partners Over the Years 2007 to Present

- National Resource Conservation Service / NRCS
- Idaho Department of Environmental Quality
- Trout and Salmon Foundation
- National Fish and Wildlife Foundation
- Idaho Department of Fish and Game
- East Side and West Side Soil Conservation District's
- South Fork Initiative / Henry's Fork Foundation
- U.S. Fish and Wildlife Service
- Jackson Hole One Fly Foundation

# Snake River Cutthroats Commitment to Rainey Creek and the South Fork Snake

- It's a big number, current estimate is \$350,000 to \$400,000

# Questions

