



# RIVERS: View Data

## RIVERS: River Inventory by Volunteers for Efficient Restoration Strategies

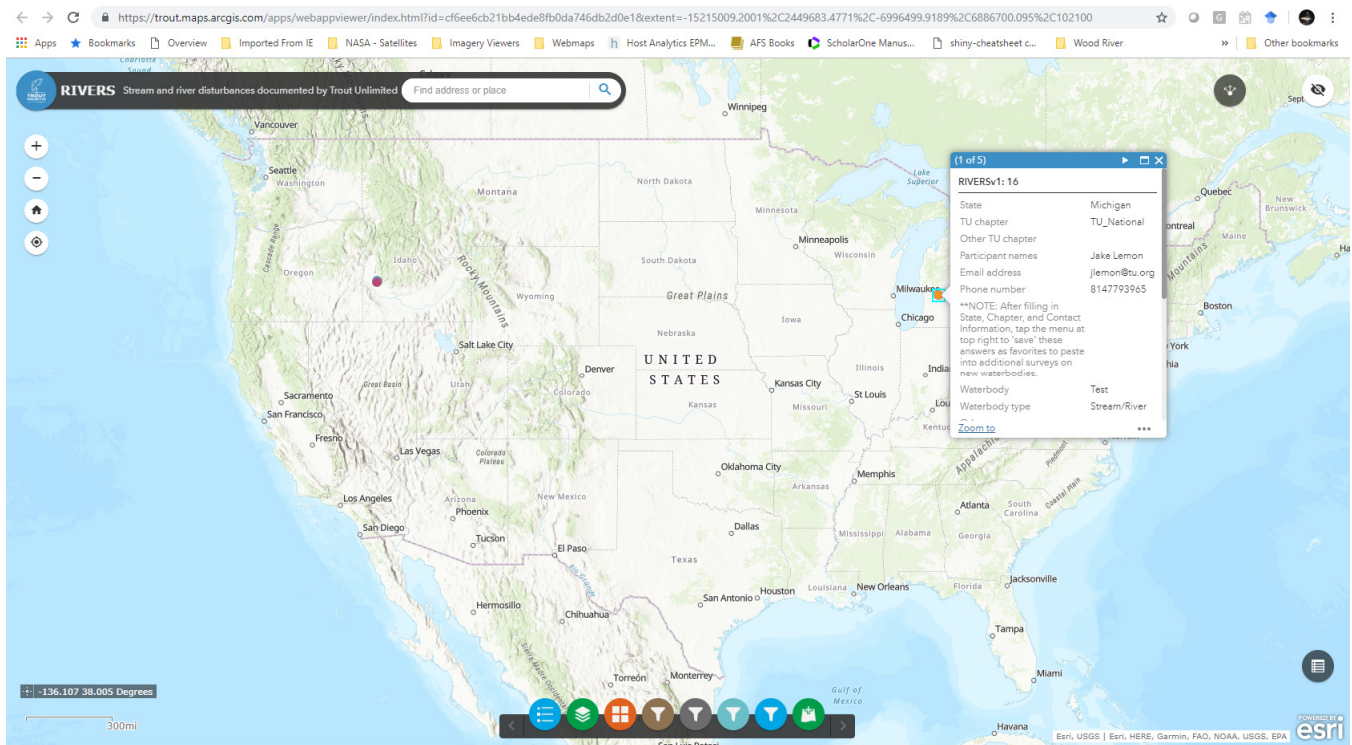
### Overview: View Collected Data

The RIVERS mobile application is a convenient way for Trout Unlimited chapters to collect data on and map disturbances on their home waters while fishing or conducting a watershed inventory. The data, once collected, can be viewed on a desktop or mobile phone and queried for specific information collected in your state or by your chapter.



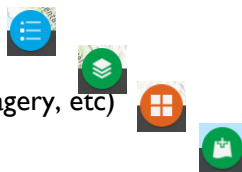
### Web Mapping Application:

At the core of RIVERS data delivery is a web mapping application. This application allows you to click on points to view collected data, including photos, as well as filter the data by State, TU Chapter, Disturbance Type, and Date. Open the Web Mapping Application by clicking on this URL: [arcg.is/IOWXev](https://arcg.is/IOWXev)



Just click on a point of interest. Or, widgets allow you to filter data at the bottom. Click on them to:

- View the Legend
- View the Map Layers
- Change the Base Map (topo map, aerial imagery, etc)
- Add data from ArcGIS Online



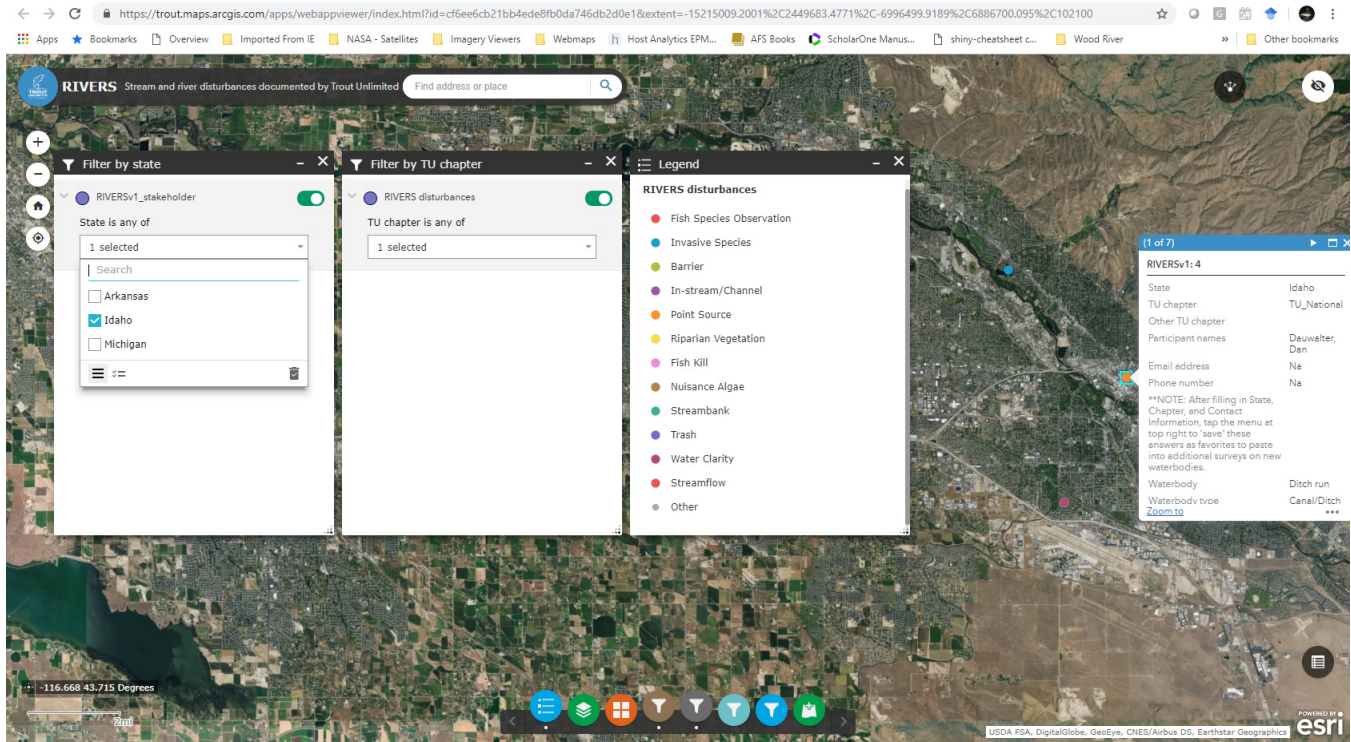
**RIVERS is a mobile application to help Trout Unlimited chapters develop a database of disturbances on their home rivers. Start a survey, enter your information, mark a location, and define a disturbance using your mobile phone. It's that easy.** (updated: 3/28/2019)



# RIVERS: View Data

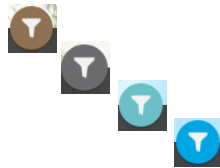
## Query your data using filter widgets:

The filter widgets at the bottom of the map can be used to query the data by State, TU Chapter, Disturbance Type, and Date. The figure below shows the dropdown boxes for the filter by State and filter by TU Chapter widgets. Notice the basemap has been changed to aerial imagery, the legend is displayed showing locations colored by disturbance type, and the map is zoomed in to Boise, Idaho.



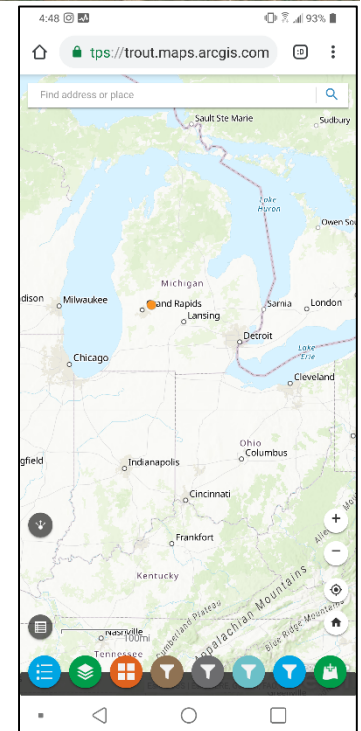
Click the filter widgets to filter by:

- State
- TU Chapter
- Disturbance Type
- Date



## View the application on your phone:

The web mapping application for RIVERS is also mobile friendly and contains the same functionality as when viewed on a desktop computer.



*The RIVERS web application can be view on a mobile phone*

**RIVERS is a mobile application to help Trout Unlimited chapters develop a database of disturbances on their home rivers. Start a survey, enter your information, mark a location, and define a disturbance using your mobile phone. It's that easy. (updated: 3/28/2019)**